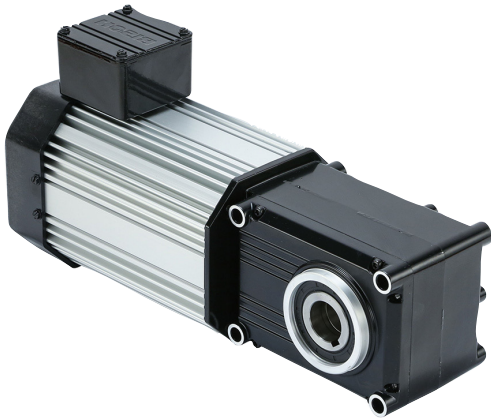


Maximum Efficiency Right-angle Gearmotors 730 230 V Three-Phase Inverter Duty (2-stage)



The heavy duty PowerSTAR® 730 Series 2-Stage 230V three phase right-angle inverter duty gearmotor offers up to 982 in-lbs of torque running continuously for reliable and energy efficient operation.

730 Series 3PH 230V Inverter Duty Ratios 10:1 to 60:1 -TEFC*

Part Number	Speed (RPM)			Rated Torque (in-lbs)			Input HP	Gear Ratio	OHL (lbs)	Rated Current (Amps)		
	6Hz	60Hz	90Hz	6Hz	60Hz	90Hz				6Hz	60Hz	90Hz
027-730G0010T	16	160	240	168	168	112	1/2	10	465	1.9	1.9	1.6
027-730G0015T	11	108	162	239	239	159	1/2	15	520	1.9	1.9	1.6
027-730G0020T	8	80	120	327	327	218	1/2	20	565	1.9	1.9	1.6
027-730G0030T	5.3	53	80	487	487	324	1/2	30	625	1.9	1.9	1.6
027-730G0040T	4	40	60	655	655	436	1/2	40	675	1.9	1.9	1.6
027-730G0050T	3.2	31	48	814	814	542	1/2	50	720	1.9	1.9	1.6
027-730G0060T	2.7	27	41	982	982	654	1/2	60	760	1.9	1.9	1.6

See accessories on page 17

